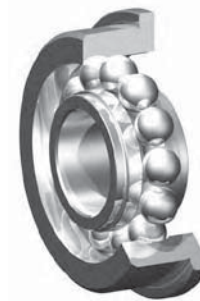
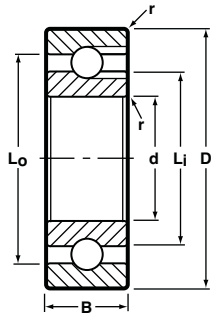


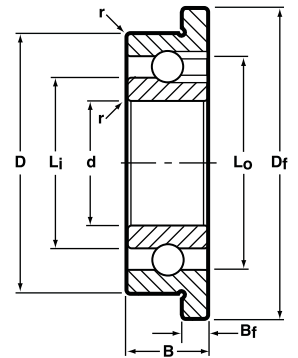
Full Ball Complement, Radial, Open, Unflanged and Flanged



Unflanged



Flanged



BASIC P/N †	BORE d		O.D. D		WIDTH B		FLANGE DIA. D _f	FLANGE WIDTH B _f	LAND DIAMETER (REFERENCE)		FILLET RADIUS r	BALL COMPLEMENT		LOAD RATINGS** LBS.	
	INCH	(mm) ◊	INCH	(mm) ◊	INCH	(mm) ◊			L _j	L _o		NO. Z	SIZE D _b	DYN. C	STATIC C ₀
SSRI-2 1/2F	.0469	1.191	.1562	3.967	.0625	1.588	.203	.013	.081	.124	.003	10	1/32	22	9
SSRI-3F	.0550	1.397	.1875	4.763	.0781	1.984	.234	.023	.093	.159	.003	8	3/64	38	15
SSRI-4SD508F	.0781	1.984	.2362	6.000	.0937	2.380	—	—	.122	.193	.003	10	3/64	49	20
SSRI-4F	.0781	1.984	.2500	6.350	.0937	2.380	.296	.023	.122	.193	.003	10	3/64	49	20
SSRI-3332F	.0937	2.380	.1875	4.763	.0625	1.588	—	—	.118	.161	.003	13	1/32	33	14
SSRI-5SD507F	.0937	2.380	.3125	7.938	.1094	2.779	.359	.023	.182	.270	.003	11	1/16	102	47
SSRI-418F	.1250	3.175	.2500	6.350	.0937	2.380	.296	.023	.161	.216	.003	15	.0394	50	23
SSRI-518F	.1250	3.175	.3125	7.938	.1094	2.779	.359	.023	.182	.270	.003	11	1/16	102	47
SSRI-618F	.1250	3.175	.3750	9.525	.1094	2.779	.422	.023	.182	.270	.005	11	1/16	102	47
SSR-2F	.1250	3.175	.3750	9.525	.1562	3.967	.440	.030	.200	.300	.012	12	1/16	109	53
SSRI-5532F	.1562	3.967	.3125	7.938	.1094	2.779	.359	.023	.221	.279	.003	16	3/64	72	34
SSRI-5632F	.1875	4.763	.3125	7.938	.1094	2.779	.359	.023	.221	.279	.003	16	3/64	72	34
SSRI-6632F	.1875	4.763	.3750	9.525	.1250	3.175	.422	.023	.235	.325	.003	13	1/16	105	50
SSR-3F	.1875	4.763	.5000	12.700	.1562	3.967	.565	.042	.276	.413	.012	11	3/32	190	93
SSRI-614F	.2500	6.350	.3750	9.525	.1250	3.175	.422	.023	.285	.341	.003	24	.0394	65	39
SSRI-814F	.2500	6.350	.5000	12.700	.1250	3.175	.547	.023	.330	.431	.005	18	1/16	126	71
SSR-4F	.2500	6.350	.6250	15.875	.1960	4.978	.690	.042	.364	.510	.012	13	3/32	231	123
SSRI-1214F	.2500	6.350	.7500	19.050	.2188	5.558	—	—	.386	.597	.016	10	9/64	576	322
SSRI-8516F	.3125	7.938	.5000	12.700	.1562	3.967	.547	.031	.362	.450	.005	20	1/16	139	78
SSRI-1438F	.3750	9.525	.8750	22.225	.2188	5.558	—	—	.521	.741	.016	12	5/32	778	470
SSRI-1412F	.5000	12.700	.8750	22.225	.2188	5.558	—	—	.622	.750	.016	22	3/32	297	201

Notes:

1. Inch to metric conversion—see page 63.
 2. Basic part numbers shown above include code "SS" for AISI 440C stainless steel. If SAE 52100 chrome alloy steel is desired delete SS.
 3. See page 61 for ABEC tolerances.
 4. r=Maximum shaft or housing fillet radius that bearing corners will clear.
- † For flanged bearings substitute prefix SSRIF- or SSRF-.
- ◊ Metric dimensions are for reference only.
- ** Load ratings are based on ABMA Standard #12.