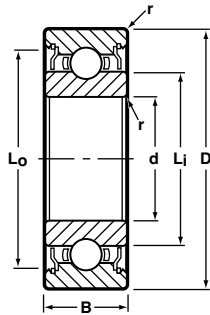




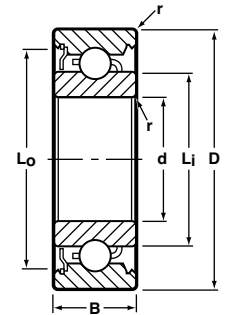
Radial, Shielded, Unflanged



Shielded Ribbon Cage



Shielded Crown Cage



BASIC P/N	STANDARD CAGE AVAILABILITY*		BORE d		O.D. D		WIDTH B				LAND DIAMETER (REFERENCE)		FILLET RADIUS r	BALL COMPLEMENT		LOAD RATINGS**		BRG. WGT. GMS. ▼
	RIBBON	CROWN	INCH	(mm) ◊	INCH	(mm) ◊	1 SHIELD		2 SHIELDS		Li	Lo		NO. Z	SIZE Db	DYN. C	STATIC Co	
							INCH	(mm) ◊	INCH	(mm) ◊								
SSRI-2 1/2ZZ		H	.0469	1.191	.1562	3.967	.0937	2.380	.0937	2.380	.081	.134	.003	6	1/32	16	5	.15
SSRI-3ZZ		H	.0550	1.397	.1875	4.763	.0937	2.380	.1094	2.779	.093	.167	.003	5	3/64	28	10	.20
SSRI-4ZZ		H	.0781	1.984	.2500	6.350	.1094	2.779	.1406	3.571	.122	.205	.003	6	3/64	35	12	.50
SSRI-3332ZZ		H	.0937	2.380	.1875	4.763	.0937	2.380	.0937	2.380	.118	.167	.003	7	1/32	19	6	.10
SSRI-3332ZZ	R		.0937	2.380	.1875	4.763	.0937	2.380	.0937	2.380	.118	.167	.003	8	1/32	21	8	.10
SSRI-5ZZ	R	H	.0937	2.380	.3125	7.938	.1094	2.779	.1406	3.571	.173	.282	.003	6	1/16	60	22	.85
SSRI-418ZZ		H	.1250	3.175	.2500	6.350	.0937	2.380	.1094	2.779	.161	.228	.003	7	.0394	30	11	.35
SSRI-418ZZ	R		.1250	3.175	.2500	6.350	.0937	2.380	.1094	2.779	.161	.228	.003	8	.0394	33	12	.35
SSRI-518ZZ	R	H	.1250	3.175	.3125	7.938	.1094	2.779	.1406	3.571	.173	.282	.003	6	1/16	60	22	.70
SSRI-618ZZ	R	H	.1250	3.175	.3750	9.525	.1094	2.779	.1406	3.571	.173	.282	.005	6	1/16	60	22	1.30
SSR-2ZZ	R	H	.1250	3.175	.3750	9.525	.1562	3.967	.1562	3.967	.200	.321	.012	7	1/16	66	26	1.30
SSR-2AZZ	R	H	.1250	3.175	.5000	12.700	.1719	4.366	.1719	4.366	.200	.321	.012	7	1/16	66	26	3.10
SSRI-1218ZZ	R		.1250	3.175	.7500	19.050	.1250	3.175	.1250	3.175	.225	.341	.010	8	1/16	76	30	3.10
SSRI-5532ZZ		H	.1562	3.967	.3125	7.938	.1094	2.779	.1250	3.175	.221	.287	.003	7	3/64	41	15	.65
SSRI-5532ZZ	R		.1562	3.967	.3125	7.938	.1094	2.779	.1250	3.175	.221	.287	.003	8	3/64	45	17	.65
SSRI-5632ZZ		H	.1875	4.763	.3125	7.938	.1094	2.779	.1250	3.175	.221	.287	.003	7	3/64	41	15	.50
SSRI-5632ZZ	R		.1875	4.763	.3125	7.938	.1094	2.779	.1250	3.175	.221	.287	.003	8	3/64	45	17	.50
SSRI-6632ZZ	R	H	.1875	4.763	.3750	9.525	.1250	3.175	.1250	3.175	.235	.341	.003	8	1/16	76	31	.90
SSR-3ZZ	R	H	.1875	4.763	.5000	12.700	.1960	4.978	.1960	4.978	.276	.435	.012	7	3/32	140	59	2.60
SSRI-614ZZ		H	.2500	6.350	.3750	9.525	.1250	3.175	.1250	3.175	.285	.348	.003	13	.0394	43	21	.65
SSRI-814ZZ	R	H	.2500	6.350	.5000	12.700	.1250	3.175	.1875	4.763	.330	.455	.005	10	1/16	88	40	1.90
SSR-4ZZ	R	H	.2500	6.350	.6250	15.875	.1960	4.978	.1960	4.978	.364	.544	.012	8	3/32	159	70	4.40
SSRI-1214ZZ	R		.2500	6.350	.7500	19.050	.2812	7.142	.2812	7.142	.341	.639	.016	6	9/64	412	192	8.70
SSRI-8516ZZ	R		.3125	7.938	.5000	12.700	.1562	3.967	.1562	3.967	.362	.460	.005	11	1/16	93	43	1.60
SSRI-1038ZZ	R		.3750	9.525	.6250	15.875	.1562	3.967	.1562	3.967	.458	.557	.010	12	1/16	96	53	2.60
SSRI-1438ZZ	R		.3750	9.525	.8750	22.225	.2812	7.142	.2812	7.142	.474	.783	.016	7	5/32	569	273	8.80
SSRI-1412ZZ	R		.5000	12.700	.8750	22.225	.2812	7.142	.2812	7.142	.622	.783	.016	12	3/32	198	110	9.78
SSRI-1812ZZ	R		.5000	12.700	1.1250	28.575	.3125	7.938	.3125	7.938	.628	.965	.016	9	5/32	684	344	22.00
SSRI-2258ZZ	R		.6250	15.875	1.3750	34.925	.3438	8.732	.3438	8.732	.868	1.132	.031	8	7/32	1500	740	34.00
SSRI-2634ZZ ♦			.7500	19.050	1.6250	41.275	.4375	11.112	.4375	11.112	1.037	1.338	.031	8	1/4	1900	980	46.00
SSRI-3078ZZ ♦			.8750	22.225	1.8750	47.625	.5000	12.700	.5000	12.700	1.225	1.526	.031	10	1/4	2200	1300	99.00

Notes:

- Inch to metric conversion—see page 63.
  - Basic part numbers shown above include code "SS" for AISI 440C stainless steel. If SAE 52100 chrome alloy steel is desired delete SS.
  - See page 61 for ABEC tolerances.
  - r=Maximum shaft or housing fillet radius that bearing corners will clear.
  - For single shield eliminate one "Z" from the basic part number.
- \* "R" Ribbon or "H" Crown cages are available as indicated. Please consult with factory for machined cage availability.
  - ◊ Metric dimensions are for reference only.
  - \*\* Load ratings are based on ABMA Standard #12.
  - ♦ Limited retainer options available. Please consult with factory.
  - ▼ Bearing weights are for reference only.