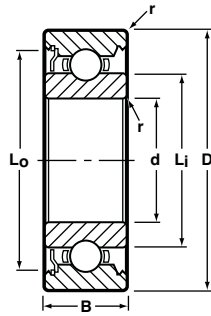




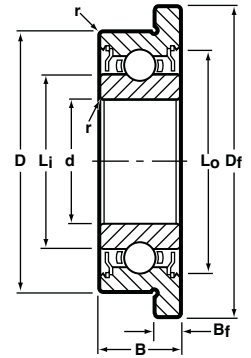
## Radial, Shielded, Unflanged and Flanged



Unflanged  
Shielded  
Ribbon Cage



Flanged  
Shielded  
Ribbon Cage



BASIC P/N †	CAGE OPTION	BORE d		O.D. D		WIDTH B		FLANGE DIA. D <sub>f</sub>	FLANGE WIDTH B <sub>f</sub>	LAND DIAMETER (REFERENCE)		FILLET RADIUS r		BALL COMPLEMENT		LOAD RATINGS**	
		mm	(INCH)◇	mm	(INCH)◇	mm	(INCH)◇			L <sub>i</sub>	L <sub>o</sub>	mm	(INCH)◇	NO. Z	SIZE D <sub>b</sub>	Dyn. C	STATIC C <sub>0</sub>
SSL-520		2.0	.0787	5.0	.1969	2.3	.0906	6.1	0.6	2.90	4.25	.08	.003	7	0.8mm	20	7
SSL-520W52		2.0	.0787	5.0	.1969	2.5	.0984	6.2	0.6	2.90	4.25	.08	.003	7	0.8mm	20	7
SSL-625		2.5	.0984	6.0	.2362	2.6	.1024	7.1	0.8	3.80	5.20	.08	.003	7	0.8mm	20	7
SSL-630		3.0	.1181	6.0	.2362	2.5	.0984	7.2	0.6	3.80	5.20	.08	.003	7	0.8mm	20	7
☆ SSL-730X5	H/M5	3.0	.1181	7.0	.2756	3.0	.1181	—	—	4.10	5.86	.10	.004	7	1.0mm	30	11
SSLFW-730 ▲		3.0	.1181	7.0	.2756	3.0	.1181	8.2	0.6	4.10	6.10	.10	.004	7	3/64	40	15
SSL-740		4.0	.1575	7.0	.2756	2.5	.0984	8.2	0.6	4.80	6.30	.08	.003	7	1/32	20	7
SSL-840		4.0	.1575	8.0	.3150	3.0	.1181	9.2	0.6	5.20	7.20	.10	.004	7	3/64	40	15
☆ SSL-940	M5/R	4.0	.1575	9.0	.3543	4.0	.1575	10.3	1.0	5.08	7.90	.10	.004	7	1/16	66	26
☆ SSLFW-940 ▲	M5/R	4.0	.1575	9.0	.3543	4.0	.1575	10.6	0.8	5.08	7.90	.10	.004	7	1/16	66	26
SSLF-1040X ▲		4.0	.1575	10.0	.3937	4.0	.1575	11.6	0.8	5.96	8.75	.15	.006	8	1/16	84	35
SSL-850		5.0	.1969	8.0	.3150	2.5	.0984	9.2	0.6	5.80	7.26	.08	.003	13	0.8mm	29	13
SSL-950		5.0	.1969	9.0	.3543	3.0	.1181	10.2	0.6	6.00	8.00	.10	.004	7	3/64	40	15
SSL-1050		5.0	.1969	10.0	.3937	4.0	.1575	11.6	0.8	6.40	8.90	.15	.006	7	1/16	68	26
☆ SSL-1150	M5	5.0	.1969	11.0	.4331	5.0	.1969	12.5	1.0	6.40	9.50	.15	.006	8	1/16	75	31
☆ SSL-1060	H/M5	6.0	.2362	10.0	.3937	3.0	.1181	11.2	0.6	6.95	9.00	.10	.004	9	3/64	49	18
SSL-1060X		6.0	.2362	10.0	.3937	3.0	.1181	—	—	7.24	8.93	.10	.004	13	1.0mm	47	22
SSL-1260		6.0	.2362	12.0	.4724	4.0	.1575	13.6	0.8	7.80	10.20	.15	.006	7	1/16	68	29
SSL-1360		6.0	.2362	13.0	.5118	5.0	.1969	15.0	1.1	7.40	11.40	.15	.006	8	2.0mm	115	49
SSLFW-1360 ▲		6.0	.2362	13.0	.5118	5.0	.1969	15.0	1.0	7.40	11.40	.15	.006	8	2.0mm	115	49
SSL-1360Y54		6.0	.2362	13.0	.5118	4.5	.1772	15.0	1.0	8.00	11.40	.15	.006	8	2.0mm	115	49
SSL-1170		7.0	.2756	11.0	.4331	3.0	.1181	12.2	0.6	8.10	10.10	.10	.004	9	3/64	46	20
☆ SSL-1370X	R	7.0	.2756	13.0	.5118	4.0	.1575	—	—	8.40	11.50	.15	.006	10	1/16	88	40
SSLFW-1470 ▲		7.0	.2756	14.0	.5512	5.0	.1969	16.0	1.0	9.00	12.40	.15	.006	9	2.0mm	126	55
☆ SSL-1470X	KC/M5/R	7.0	.2756	14.0	.5512	5.0	.1969	—	—	9.20	11.77	.15	.006	11	1/16	93	43
SSL-1280		8.0	.3150	12.0	.4724	3.5	.1378	13.6	0.8	9.10	11.20	.10	.004	11	3/64	53	24
SSL-1480		8.0	.3150	14.0	.5512	4.0	.1575	15.6	0.8	9.90	12.50	.15	.006	10	1/16	86	42
☆ SSL-1680	KC/R	8.0	.3150	16.0	.6299	5.0	.1969	18.0	1.1	10.40	14.00	.20	.008	9	3/32	170	79
☆ SSL-1680W06	KC/R	8.0	.3150	16.0	.6299	6.0	.2362	—	—	10.40	14.00	.20	.012	9	3/32	170	79
SSL-1790		9.0	.3543	17.0	.6693	5.0	.1969	19.0	1.1	11.20	15.30	.20	.008	10	3/32	184	90
SSL-2090		9.0	.3543	20.0	.7874	6.0	.2362	—	—	12.32	17.40	.30	.012	9	7/64	225	108
☆ SSL-1910	R	10.0	.3937	19.0	.7480	7.0	.2756	—	—	12.32	17.40	.30	.012	9	7/64	225	108

☆ Production standard.

### Notes:

- Metric to inch conversion—see page 63.
- Basic part numbers shown above include code "SS" for AISI 440C stainless steel. If SAE 52100 chrome alloy steel is desired delete SS.
- See page 61 for ABEC tolerances.
- r=Maximum shaft or housing fillet radius that bearing corners will clear.
- Please consult with factory for cage availability.
- While we have the capability to produce the sizes listed, they are not all currently in production. Please consult with factory for minimum order quantity and quote.
- Add "Z" for single shield, "ZZ" for two shields as a suffix to basic part number prior to "Y" or "W" width variations.

† For flanged bearing substitute prefix SSLF- when applicable.

▲ Available only as flanged type.

◇ Inch conversions are given for reference only.

\*\* Load ratings are based on ABMA Standard #12.