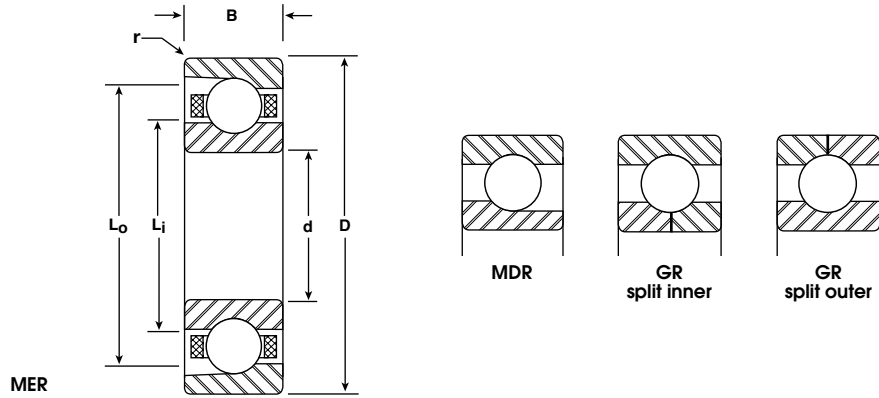
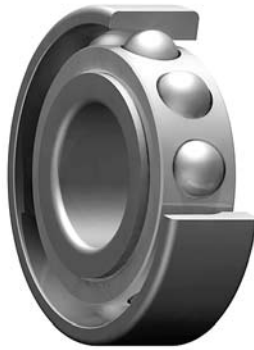


**Metric Series
Angular Contact**

Bore Sizes 10-25 mm



BASIC P/N	BORE d		O.D. D		WIDTH B		LAND DIAMETER (REFERENCE)		FILLET RADIUS r	BALL COMPLEMENT		LOAD RATINGS LBS	
	mm	INCH	mm	INCH	mm	INCH	Li	Lo		NO.	SIZE	DYN. C	STATIC Co
							INCH	INCH	INCH		INCH		
MER-1900	10	.3937	22	.8661	6	.2362	.570	.734	.012	11	1/8	670	340
MER-100	10	.3937	26	1.0236	8	.3150	.583	.837	.012	9	3/16	1200	560
MER-200	10	.3937	30	1.1811	9	.3543	.656	.919	.024	9	7/32	1550	750
MER-300	10	.3937	35	1.3780	11	.4331	.717	1.055	.024	8	9/32	2200	1000
MER-1901	12	.4724	24	.9449	6	.2362	.629	.800	.012	11	9/64	830	430
MER-101	12	.4724	28	1.1024	8	.3150	.670	.924	.012	10	3/16	1300	650
MER-201	12	.4724	32	1.2598	10	.3937	.725	1.007	.024	9	15/64	1800	870
MER-301	12	.4724	37	1.4567	12	.4724	.777	1.153	.039	7	5/16	2400	1100
MER-1902	15	.5906	28	1.1024	7	.2756	.735	.972	.012	12	5/32	1050	590
MER-102	15	.5906	32	1.2598	9	.3543	.816	1.042	.012	11	3/16	1400	760
MER-202	15	.5906	35	1.3780	11	.4331	.815	1.153	.024	10	1/4	2200	1150
MER-302	15	.5906	42	1.6535	13	.5118	.934	1.310	.039	9	5/16	3000	1550
MER-1903	17	.6693	30	1.1811	7	.2756	.832	1.015	.012	13	5/32	1100	660
MER-103	17	.6693	35	1.3780	10	.3937	.895	1.153	.012	13	3/16	1550	930
MER-203	17	.6693	40	1.5748	12	.4724	.952	1.292	.024	10	17/64	2450	1350
MER-303	17	.6693	47	1.8504	14	.5512	1.034	1.485	.039	8	3/8	3750	1900
MER-1804	20	.7874	32	1.2598	7	.2756	.948	1.098	.012	17	1/8	850	580
MER-1904	20	.7874	37	1.4567	9	.3543	1.002	1.267	.012	11	7/32	1850	1050
MER-104	20	.7874	42	1.6535	12	.4724	1.075	1.395	.024	11	1/4	2400	1350
MER-204	20	.7874	47	1.8504	14	.5512	1.131	1.506	.039	10	5/16	3300	1850
MER-304	20	.7874	52	2.0472	15	.5906	1.192	1.643	.039	9	3/8	4200	2250
MER-1805	25	.9843	37	1.4567	7	.2756	1.145	1.295	.012	20	1/8	920	700
MER-1905	25	.9843	42	1.6535	9	.3543	1.195	1.460	.012	14	7/32	2200	1400
MER-105	25	.9843	47	1.8504	12	.4724	1.267	1.567	.024	13	1/4	2650	1700
MER-205	25	.9843	52	2.0472	15	.5906	1.328	1.703	.039	11	5/16	3550	2150
MER-305	25	.9843	62	2.4409	17	.6693	1.450	1.976	.039	9	15/32	5590	3140

Notes:

- Metric series angular contact ball bearings are typically manufactured from 52100 chrome steel to ABEC 3, 5 and 7 tolerances per ABMA Standard 20.
- Standard contact angles are 15° and 25°. Other options are available.
- Part numbers listed are with nonseparable, outer ring relieved configuration. Other design options are available.
- Fillet Radius (r) is the maximum shaft or housing fillet radius that bearing corners will clear.