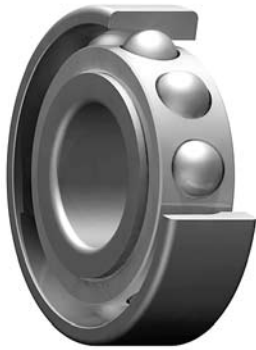


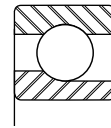
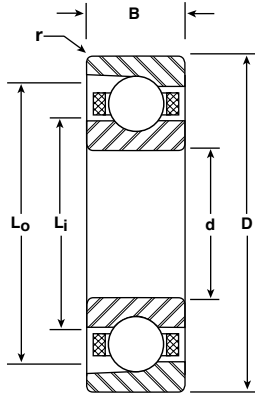


**Metric Series
Angular Contact**

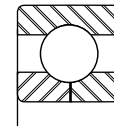
Bore Sizes 90-130 mm



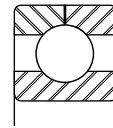
MER



MDR



GR split inner



GR split outer

BASIC P/N	BORE d		O.D. D		WIDTH B		LAND DIAMETER (REFERENCE)		FILLET RADIUS r	BALL COMPLEMENT		LOAD RATINGS LBS	
	mm	INCH	mm	INCH	mm	INCH	Li	Lo		NO.	SIZE	DYN. C	STATIC Co
							INCH	INCH	INCH		INCH		
MER-1818	90	3.5433	115	4.5276	13	.5118	3.904	4.166	.039	31	9/32	4950	5600
MER-1918	90	3.5433	125	4.9213	18	.7087	3.969	4.495	.039	26	7/16	10900	11600
MER-118	90	3.5433	140	5.5118	24	.9449	4.151	4.903	.059	20	5/8	18200	17400
MER-218	90	3.5433	160	6.2992	30	1.1811	4.394	5.447	.079	15	7/8	28100	24100
MER-318	90	3.5433	190	7.4803	43	1.6929	4.797	6.226	.098	13	1-3/16	44200	36200
MER-1819	95	3.7402	120	4.7244	13	.5118	4.101	4.363	.039	32	9/32	5000	5750
MER-1919	95	3.7402	130	5.1181	18	.7087	4.169	4.692	.039	28	7/16	11300	12600
MER-119	95	3.7402	145	5.7087	24	.9449	4.348	5.100	.059	21	5/8	18600	18400
MER-219	95	3.7402	170	6.6929	32	1.2598	4.652	5.780	.079	15	15/16	31900	27600
MER-319	95	3.7402	200	7.8740	45	1.7717	5.055	6.559	.098	13	1-1/4	48500	40100
MER-1820	100	3.9370	125	4.9213	13	.5118	4.259	4.598	.039	34	9/32	5150	6100
MER-1920	100	3.9370	140	5.5118	20	.7874	4.423	5.025	.039	26	1/2	13900	15100
MER-120	100	3.9370	150	5.9055	24	.9449	4.545	5.297	.059	21	5/8	18500	18600
MER-220	100	3.9370	180	7.0866	34	1.3386	4.910	6.113	.079	15	1	35800	31300
MER-1821	105	4.1339	130	5.1181	13	.5118	4.456	4.795	.039	36	9/32	5300	6400
MER-1921	105	4.1339	145	5.7087	20	.7874	4.620	5.222	.039	27	1/2	14200	15800
MER-121	105	4.1339	160	6.2992	26	1.0236	4.802	5.630	.079	21	11/16	22100	22300
MER-221	105	4.1339	190	7.4803	36	1.4173	5.167	6.446	.079	15	1-1/16	40000	35300
MER-1822	110	4.3307	140	5.5118	16	.6299	4.714	5.128	.039	32	11/32	7300	8650
MER-1922	110	4.3307	150	5.9055	20	.7874	4.817	5.418	.039	28	1/2	14300	16500
MER-122	110	4.3307	170	6.6929	28	1.1024	5.060	5.963	.079	20	3/4	25200	25100
MER-222	110	4.3307	200	7.8740	38	1.4961	5.425	6.779	.079	15	1-1/8	44300	39400
MER-1824	120	4.7244	150	5.9055	16	.6299	5.108	5.521	.039	35	11/32	7600	9400
MER-1924	120	4.7244	165	6.4961	22	.8661	5.271	5.948	.039	27	9/16	17400	20100
MER-124	120	4.7244	180	7.0866	28	1.1024	5.454	6.356	.079	22	3/4	26600	28000
MER-224	120	4.7244	215	8.4646	40	1.5748	5.917	7.271	.079	16	1-1/8	46200	43000
MER-1826	130	5.1181	165	6.4961	18	.7087	5.562	6.051	.039	32	13/32	9900	12100
MER-1926	130	5.1181	180	7.0866	24	.9449	5.726	6.478	.059	27	5/8	21200	24700
MER-126	130	5.1181	200	7.8740	33	1.2992	5.969	7.022	.079	20	7/8	33200	34300
MER-226	130	5.1181	230	9.0551	40	1.5748	6.372	7.801	.098	17	1-3/16	52900	51200

Notes:

1. Metric series angular contact ball bearings are typically manufactured from 52100 chrome steel to ABEC 3, 5 and 7 tolerances per ABMA Standard 20.
2. Standard contact angles are 15° and 25°. Other options are available.
3. Part numbers listed are with nonseparable, outer ring relieved configuration. Other design options are available.
4. Fillet Radius (r) is the maximum shaft or housing fillet radius that bearing corners will clear.